

SHIP PARTICULARS



EL REEDY STARS FOR OWNING AND MANAGING SHIPS

MAIN DATA

| | | | |
|---------------------|----------------------------|----------------------|--------------|
| SHIP'S NAME | ELREEDY STAR | FLAG | EGYPT |
| EX. NAME | BBC OSTFRIESLAND | PORT OF REGISTRY | ALEXANDRIA |
| CALL SIGN | 6 A L J | LENGTH OVER ALL | 153.22 m |
| IMO No. | 9161182 | BREADTH | 23.68 m |
| MMSI | 622112802 | DEPTH MOULDED | 13.50 m |
| GRT | 13066 | DISPLACEMENT,SUMMER | 25766 m.t |
| NRT | 6914 | Deadweight summer | 20567.66 m.t |
| SUMMER DRAUGHT | 9.75 m | LIGHT SHIP | 5198.5 |
| T.P.C | 31.41 T/Cm | NO. OF CERW | 18 Persons |
| TYPE OF VESSEL | MULTIPURPOSE | OFFICIAL No. | 91026 |
| TRADING AREA | A1, A2, A3 | SUEZ NUMBER | 23120 |
| LENGTH BET. PP | 145.75 m | PANAMA CANAL No. | 391506 |
| EXTREME HIGH | 45.24 m | COMPANY ID No. | 5036838 |
| Deadweight winter | 19931.13 mt | WINTER DRAUGHT | 9.55 |
| Deadweight tropical | 21207.7 mt | TROPICAL DRAUGHT | 9.95 |
| NT SUEZ | 11816.21 | F.W ALLOWANCE | 205 mm |
| GT SUEZ | 13417.54 | Total Holds Capacity | 24928 m3 |
| CLASSIFICATION | NKK | NKK No. | 989730 |
| CLASS HULL | 100 A5 | CLASS MACHINERY | MC AUT |
| PLACE/DATE OF BUILT | FLENSBURG / GERMANY / 1998 | | |

ENGINE DATA

| | | | |
|--------------|--------------------------|------------|----------------------|
| MAIN ENGINE | MITSUBISHI 6UEC 50 LS II | KW / HP | 8250 kW / 11200 hp |
| PROPELLER | 5 BLADED FIXED PITCH | SEA SPEED | 14,0 kn |
| BOW THRUSTER | NONE | GENERATOR | 2 x YANMAR 6N18AL-EV |
| RUDDER TYPE | BALLANCE SPADE RUDDER | MAX. ANGLE | 42 DEGREES |

HOLDS / HATCHES / CRANES DATA

| | | | |
|------------------------|---|------------------------|-------------------------|
| CARGO HOLD CAPACITY | 24,982 CBM / 882,249 CBFT | FLOOR SPACE UNDER DECK | 1,849 SQM / 19,908 SQFT |
| CRANES | 2XMC GREGOR 60 TONS / EACH | FLOOR SPACE ON DECK | 1,766 SQM / 19,009 SQFT |
| DECK STRENGTHS PER SQM | TANKTOP: 15,0 T/SQM HATCH COVER: 2.0 T/SQM | CONTAINER INTAKE | 1300 TEU |

SHIP'S CONTACT

| | | | |
|-------------------------|------------------------------|-------------------------|----------------|
| SHIP'S E-MAIL | | SHIP'S MOBILE PHONE NO. | 00881677744639 |
| elreedystar@elreedy.com | AT ANCHOR,BERTH AND DRIFTING | INMARSAT C TELEX 1 | 462200259 |
| Elreedystar@skyfile.com | AT SAILING | INMARSAT C TELEX 2 | 462200257 |

COMPANY DATA

| | |
|-------------------|---|
| REGISTERED OWNER | EL REEDY STARS FOR OWNING AND MANAGING SHIPS VILLA NO. 1 , ST.39 , RAS EL BAR – DAMIETTA-EGYPT |
| COMPANY PHONE NO. | +2057-2525151 |
| COMPANY FAX | +2057-2525616 |
| COMPANY E-MAIL | agency@elreedyagency.com |

EL REEDY SHIPPING AGENCY

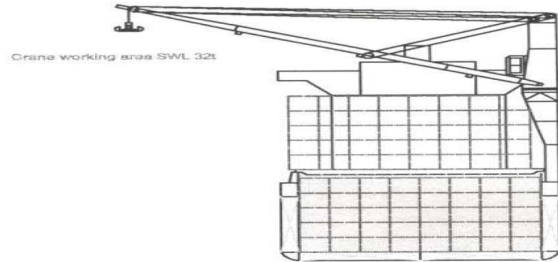
SHIP OWNERS-SHIPPING AGENCY-SHIPBROKERS



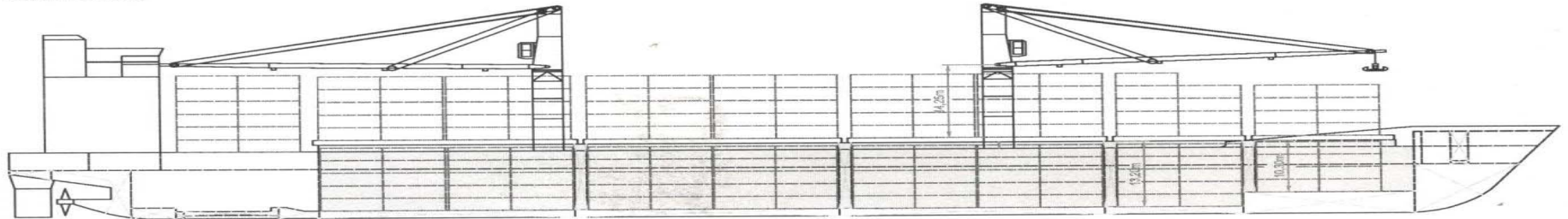
الریدی وشركاه للتوكيلات الملاحيّة

ملاك سفن-وكلاء ملاحيون-وسطاء بواخر

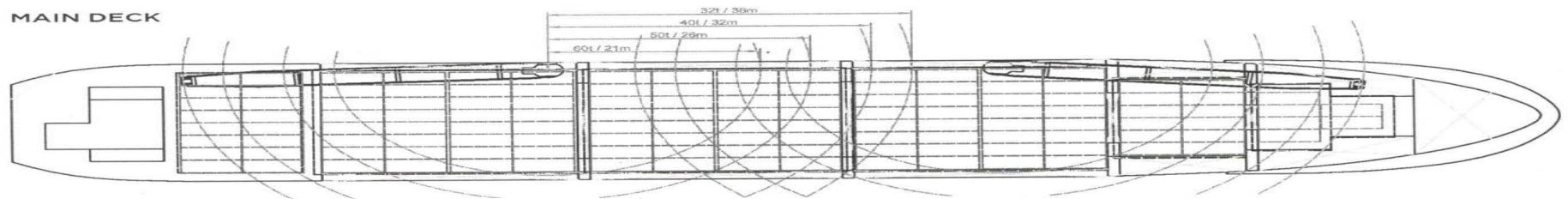
M/V : ELREEDY STAR



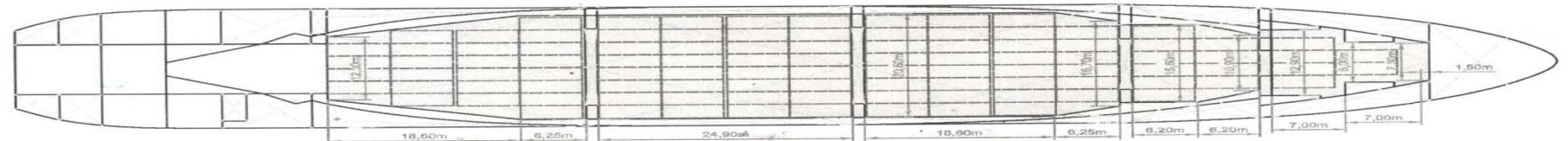
SIDE VIEW



MAIN DECK



HOLDS & DOUBLE BOTTOM

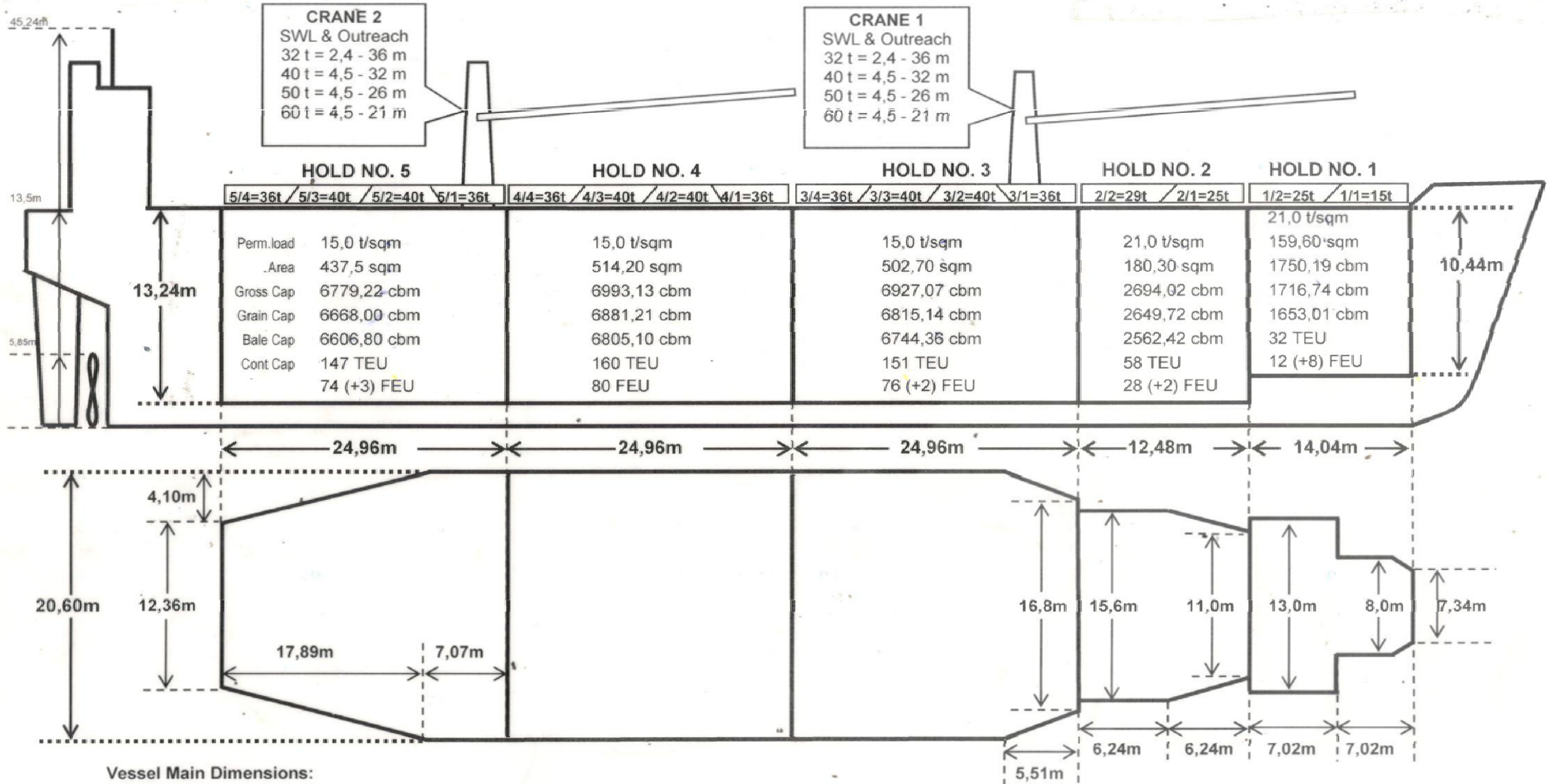




M/V : ELREEDY STAR

HOLD CAPACITY

FLAG: EGYPT





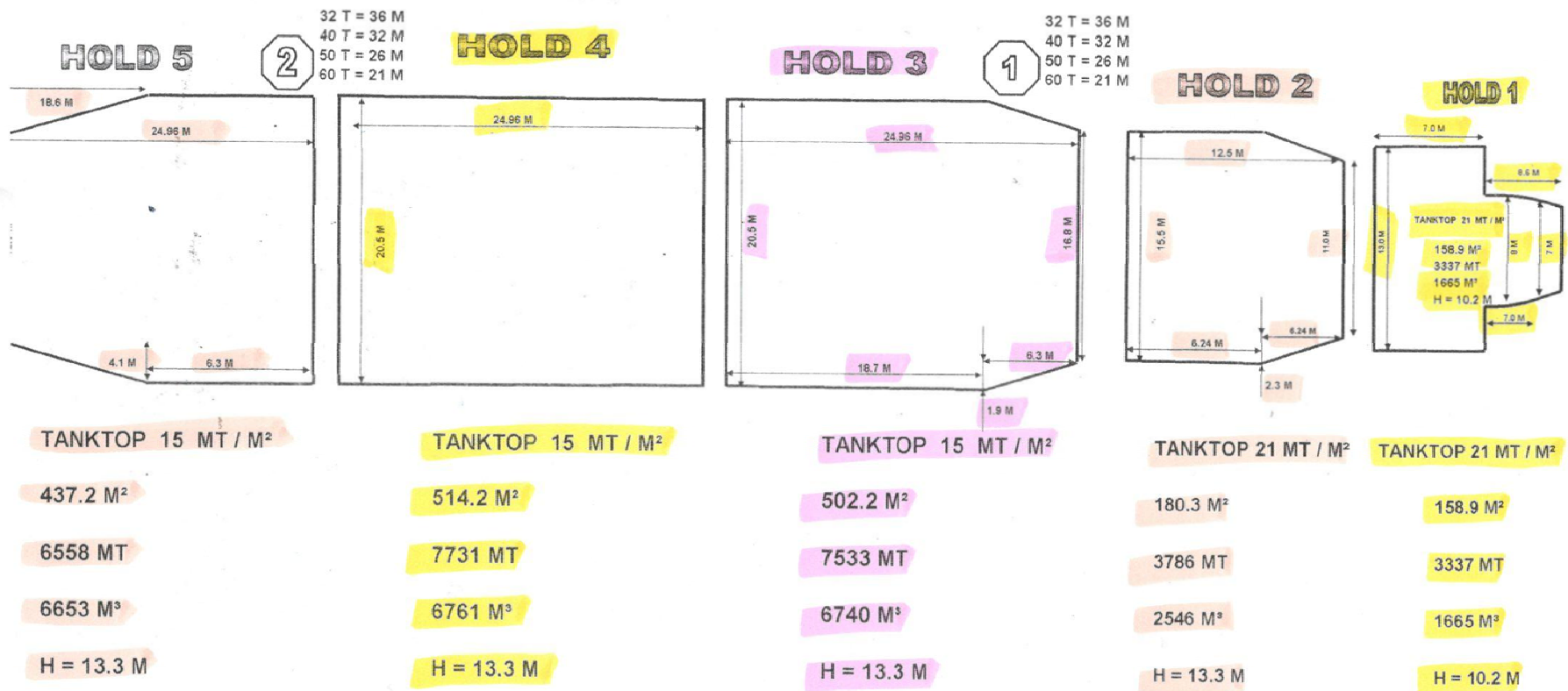
ELREEDY STAR LOA = 153.22 M BEAM = 23.68 M MAX HIGH FROM KEEL = 45.24 M

RAIN CAPACITY = 24859 CBM = 877882 CBF BALE CAPACITY = 24365 CBM = 860442 CBF

DWT SUMMER = 20567.66 MT

DRAFT SUMMER 9.75 M

HOLDS CAPACITY





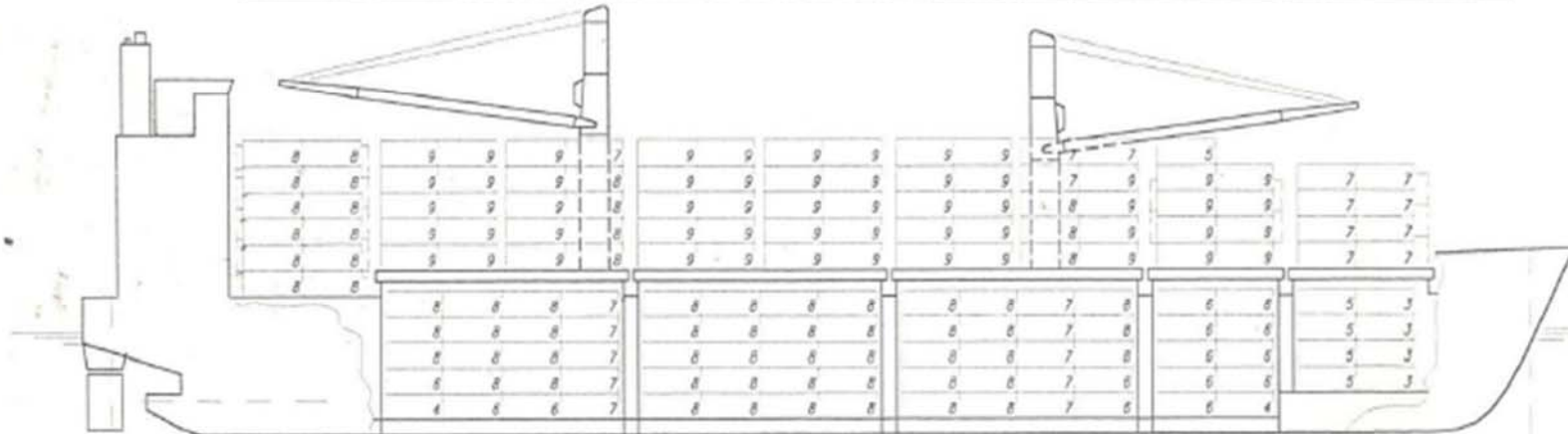
SHIP'S EQUIPMENT CENTRE

CONAVAL
CONTAINER LASHING EQUIPMENT



CONTAINER STOWAGE PLAN - DECK AND HOLD -

| | | | | | | | | | | | | | | | | | | |
|----|----|----|----|----|----|----|----|----|----|----|----|----|----|----|----|----|----|--------|
| 35 | 33 | 31 | 29 | 27 | 25 | 23 | 21 | 19 | 17 | 15 | 13 | 11 | 09 | 07 | 05 | 03 | 01 | 20'BAY |
| 34 | | 30 | | 26 | | 22 | | 18 | | 14 | | 10 | | 06 | | 02 | | 40'BAY |
| 34 | | - | | - | | - | | - | | - | | - | | 06 | | 02 | | 45'BAY |



| | | | | | | | | | | | | | | | | | | | | |
|----|----|----|----|-------|----|----|----|----|----|----|----|-------|----|----|----|----|----|------|---------------|---------|
| 48 | 48 | 45 | 45 | 45 | 39 | 45 | 45 | 45 | 45 | 45 | 45 | 38 | 43 | 41 | 36 | 28 | 28 | DECK | 20'CONT. | 754 |
| 48 | | 45 | | 39(5) | | 45 | | 45 | | 45 | | 38(4) | | 36 | | 28 | | | 40'(20')CONT. | 369 (9) |
| 32 | | - | | - | | - | | - | | - | | - | | 18 | | 12 | | | 45'CONT. | 62 |

| | | | | | | | | | | | | | | | | | | | | |
|-------|----|-------|----|----|----|----|----|----|----|----|----|-------|----|-------|----|-------|----|------|---------------|----------|
| 34 | 38 | 38 | 35 | 40 | 40 | 40 | 40 | 40 | 40 | 40 | 40 | 35 | 36 | 30 | 28 | 20 | 12 | HOLD | 20'CONT. | 546 |
| 34(4) | | 34(1) | | 40 | | 40 | | 40 | | 40 | | 33(2) | | 28(2) | | 12(8) | | | 40'(20')CONT. | 261 (17) |

| | | |
|--|---------------|----------|
| CONTAINER CAPACITY TOTAL - 1300 TEU - | 20'CONT. | 1300 |
| | 40'(20')CONT. | 630 (26) |
| | 45'CONT. | 62 |



M/V : ELREEDY STAR

FLAG : EGYPT

HATCH COVERS MOVEMENT SEQUENCES

| HOLD 1 | | HOLD 2 | | HOLD 3 | | | | HOLD 4 | | | | HOLD 5 | | | |
|-----------|-----------|-----------|-----------|-----------|-----------|-----------|-----------|-----------|-----------|-----------|-----------|-----------|-----------|-----------|-----------|
| BAY 02 | | BAY 06 | | BAY 10 | | BAY 14 | | BAY 18 | | BAY 22 | | BAY 26 | | BAY 30 | |
| BAY 01 | BAY 03 | BAY 05 | BAY 07 | BAY 09 | BAY 11 | BAY 13 | BAY 15 | BAY 17 | BAY 19 | BAY 21 | BAY 23 | BAY 25 | BAY 27 | BAY 29 | BAY 31 |
| HC 1/1 | HC 1/2 | HC 2/1 | HC 2/2 | HC 3/1 | HC 3/2 | HC 3/3 | HC 3/4 | HC 4/1 | HC 4/2 | HC 4/3 | HC 4/4 | HC 5/1 | HC 5/2 | HC 5/3 | HC 5/4 |
| 15 T | 25 T | 25 T | 29 T | 36 T | 40 T | 40 T | 36 T | 36 T | 40 T | 40 T | 36 T | 36 T | 40 T | 40 T | 36 T |
| BAY 01 | BAY 03 | BAY 05 | BAY 07 | BAY 09 | BAY 11 | BAY 13 | BAY 15 | BAY 17 | BAY 19 | BAY 21 | BAY 23 | BAY 25 | BAY 27 | BAY 29 | BAY 31 |

NOTE : THE RED HATCH COVER HAVE TO BE OPENED FIRST

THE YELLOW HATCH COVER HAVE TO BE CLOSED FIRST

THE WEATHERTIGHT HATCH COVERS ARE OF MACGREGOR LIFT-AWAY TYPE OPERATED BY CRANE