

Ship Name	GOLDEN SEA
Ex. Name	SIR ALBERT
IMO Number	9173355
Call Sign	HOLP
MMSI Number	374156000
Flag	PANAMA
Class	NIPPON KAIJI KYOKAI (NK) NO.980166
Class	NK NS STRENGTHENED FOR HEAVY CARGOES (NO.1&2 MAY BE EMPTY)
P & I Club	BRITISH MARINE
Hull & Machinery	STRENGTHED H.CGO, DIESEL ENGINE
Ship Type	BULK CARRIER
Ship Owners	KR STAR SHIPPING CO.
IMO Co Reg No.	5887128

Hull

Hatch Dimensions

Hatch Number 1	13.30 X11.30 MTR
Hatch Number 2	14.25 X15.40 MTR
Hatch Number 3	14.25 X15.40 MTR
Hatch Number 4	14.25 X15.40 MTR
Hatch Cover Type	

Hold Dimensions

Hold Grain and Bale Capacity

	Grain CBM	Bale CBM
Hold Number 1	3522.14	3305.94
HOLD NUMBER 2	4851.41	4474.55
HOLD NUMBER 3	4857.41	4474.55
HOLD NUMBER 4	4403.42	4134.96

Additional Information

Draft in Ballast	Fore 3.80 m / aft 6.40 m
Drain Loaded	fore m / aft m
Air Draft in Ballast	33.0 m
Air Dra_ in Loaded	29.0 m
Free Board (ballast)	7.7 m
Free Board (Loaded)	3.424 m
TPC (Summer)	26.8 MT

Distance from waterline to Hatch coamings

Ballast / Loaded	9.5m /7.0 m
------------------	-------------

Others Details	
Distance from Bottom Line to Hatch Coaming Top	11.2 m
Distance from Water Line to Hatch Coaming Top	9.5 m
Distance from Tank top to underside of Closed Hatch Cover	11.2 m
Grain Fitted & Log Fitted	Yes
Holds Fitted With Co2 Fire Fighting	Fixed CO2



Ship Manager / DOC & ISM	ELREEDY SHIPPING AGENCY
IMO Co Reg No.	5036838

Tonnage

Length Overall	135.80M
Registered Length	135.80M
Registered Breadth	22.00M
Moulded Depth	12.20M
Gross Tonnage	9973MT
Net Tonnage	4781MT
Deadweight	15963MT
Cargo Carry	BULK
Summer Draft	8.80M
Lightship	4323MT

Gear Description

Manufacturer	TSUJI HEAVY INDYSTRIES OC.LTD
Manufacturer No	JIS G 3525(SH CRAN)
Number	3
Capacity	3X30 MT
luffing speed (Max.)	
Max Outreach	18 M
Safe for this voyage	
Max Heel / Trim	

Machinery

Main Engine	HUTACHI ZOSEN B& W 6S 35 MC
Power of M / E	4200 KW
Propeller Type	FIXED

Auxiliary Engine	YANMER
Power of A / E	360 KW

Shaft Generator	NA
Power	NA

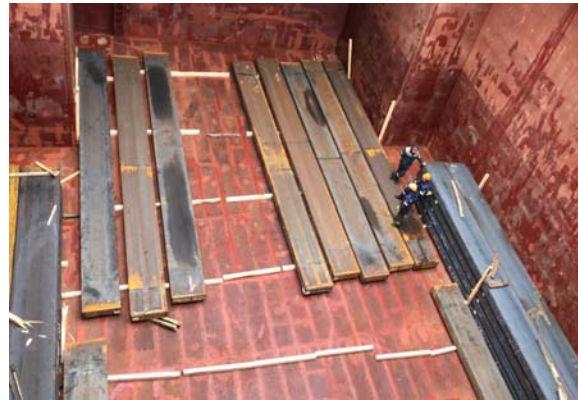
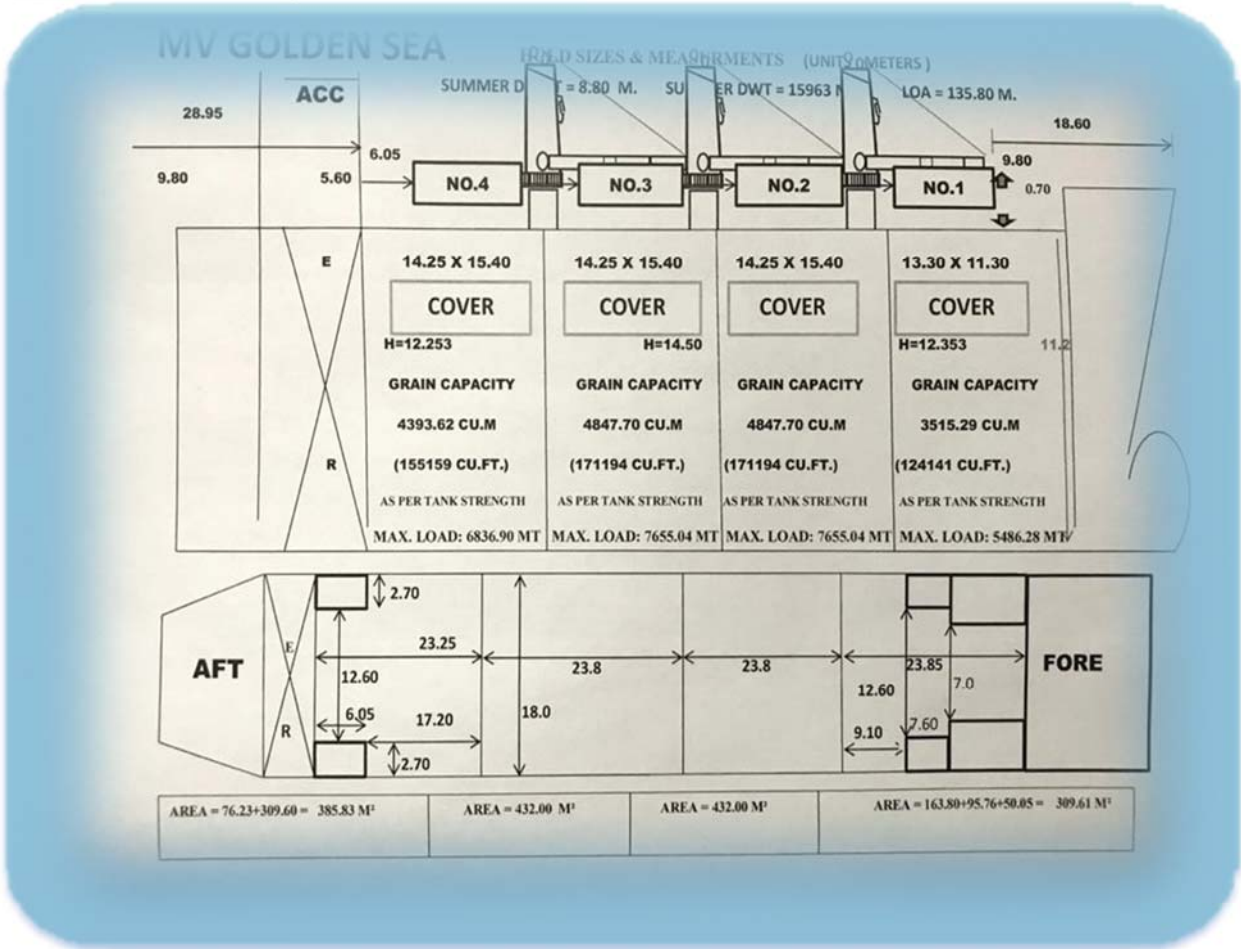
Bow Thruster	NA
Diesel Oil	79.82 M3 (85%)
Ballast Water	7727 M3 (100%)
Fresh Water	331 M3 (100%)

Speed Service

Ballast (About WOG)	12.00 KNOTS
Loaded (About WOG)	11.5 KNOTS
Max Speed	13.00 KNOTS

Tanks Capacity (Tank Capacity (100 %) in Cubic Meters

Hold Mechanical Ventilation	4 Set CargoFan	Lubricants	61.48 CBM
Maximum Permissible Loads		Bilge / Sludge	27.07 / 24.8 CBM (Holding Capacity)
Tank top	18 mt/m2		
Tween Deck	N/A		
Weather Deck Hatch Cover	1.7 mt/m2		



MV : GOLDEN SEA

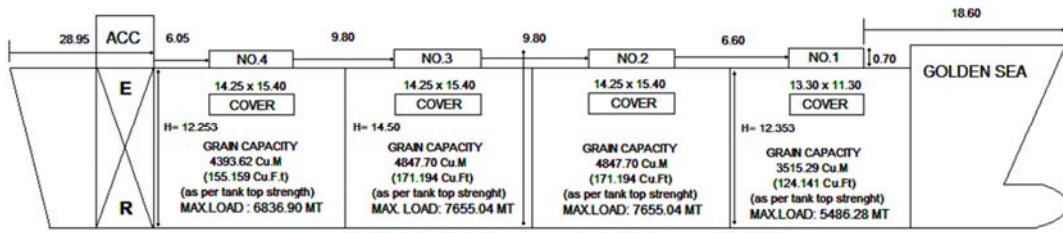
HOLD SIZES AND MEASUREMENTS

(UNITS : METERS)

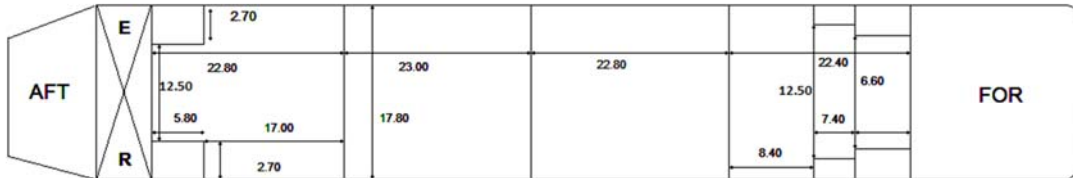
SUMMER DRAFT = 8.80 M

SUMMER DWT = 15963 MT

LOA 135.80 M



GRAIN TOTAL CAPACITY = 17604.31 Cu.M (621.688 Cu.Ft)
 DISTANCE FROM KEEL TO TOP OF HATCH COVERS = 14.50 MTRS



Area = 76.23 + 309.60 = 385.83 M ²	Area = 432.00 M ²	Area = 432.00 M ²	Area = 163.80 + 95.76 + 50.05 = 309.61 M ²
---	------------------------------	------------------------------	---

CRANES CAPACITY CRANES NO. 2 & 3 = 30 MT. CRANE NO. 1 = 25 MT

MASTER : HAYTHAM ELREEDY